

Zorn and Richard Berg, and for approximately three months in Paris with Edmond François Aman-Jean. In 1894, he came to Bethany College in Lindsborg, Kansas, to teach languages and assist in the art department and vocal music department. He remained at Bethany for the remainder of his career, becoming the principal art instructor in 1899 and retiring in 1946. Throughout this period, and after he retired as Professor Emeritus, he was a prolific painter and printmaker until his death in 1954. During his lifetime he completed in excess of 2600 oil paintings and 500 watercolors. He created 207 lithographs, 94 block prints and 27 drypoints - which when the editions are totaled amount to over 33,000 prints. In addition he was a consummate draftsman, filling over 80 sketchbooks.

Throughout his career he exhibited extensively throughout the United States and in Sweden. His works are found in every major Kansas art museum and the Nelson-Atkins Museum of Art, the Brooklyn Museum of Art, the Museum of Fine Arts in Santa Fe, the Library of Congress, the Chicago Art Institute, the Denver Art Museum, the Philadelphia Museum of Art and the National Museum of Stockholm.

Birger Sandzén was a founder of the Mid-West Art Exhibition held annually in Lindsborg and the Smoky Hill Art Club. He organized the Prairie Water Color Painters and was a charter member of the Prairie Print Makers. He was a member of the Philadelphia Water Color Society; the New York Water Color Club; the Society of American Etchers, Lithographers, and Woodcutters; the Taos Society of Artists; and other important professional groups.

He was in demand as a guest artist, teaching at the

Broadmoor Art Academy (later the Colorado Springs Fine Arts Center), the Chappell Summer School in Estes Park, Stephens College, the Kansas City Art Institute, Utah State College and the University of Michigan. He refused many permanent positions at other outstanding institutions because of his dedication to Bethany College and Lindsborg. Birger Sandzén also received honorary doctorates from Midland College in Nebraska, the University of Nebraska in Lincoln, and Kansas State University in Manhattan, KS.

Upcoming Events @ The Filley

Monday, April 4th, 6:30 to 7:30 pm. Open House Friends and Family Night featuring all student artwork created during the Winter session of art classes! Join us for refreshments at the Filley Art Museum!

Filley North Gallery: April 22nd to August 12, 2016: Artists John DeAndrea and Ariel DeAndrea will bring a once in a lifetime exhibit to Pratt, KS. John DeAndrea, Verist sculptor, is internationally celebrated and renowned for his hyperrealist human figure sculptures (Oil painted bronze) that are typically posed in true-to-life positions, pushing the boundaries of realism to the extreme. John's daughter, Ariel DeAndrea, is an accomplished realist painter. Ariel explores the movement, life and spirituality in the design and symbolism of an otherwise lifeless object: the origami crane. Her Oil paintings feature the paper birds in natural settings, bodies of water from around the world.

North Gallery: August 20th to December 3rd, 2016: Carol Long Pottery - Remarkable artist of St. John, Carol Long, draws influence from plant and animal life and is fascinated by the small complexities of the micro aspects of nature. More about Carol Long Pottery at carolongpottery.com!



Birger Sandzén, "Nils Gustaf's House" Lithograph; loaned from a private family collection



Birger Sandzén, "Kansas Landscape" Oil on board; loaned by USD 382

Upcoming Exhibit at The Filley

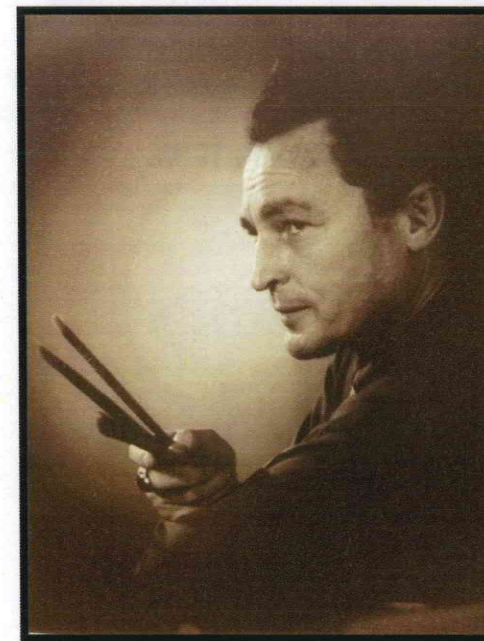
March 26, 2016 through December 2016

"Prairie Painters and Potters"

Birger Sandzén, Charles Rogers, Ray Kahmeyer

Featuring selections from the following collections:

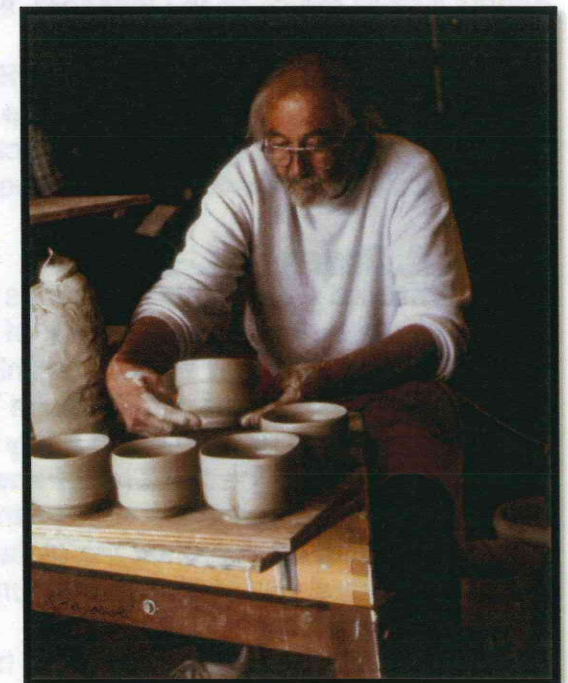
Birger Sandzén Memorial Gallery, Kahmeyer Family, USD 382, Pratt Public Library, Several Private Regional Family Collections, & The Dr. Vernon and Emily "Mimi" Filley Permanent Collection



Charles B. Rogers



Birger Sandzén



Ray Kahmeyer

Saturday July 2, 2016, at 6pm

Exhibition Reception in appreciation of the featured collections and families

\$10 for non-members; FREE for MEMBERS
Enjoy wine/beer and light hors d'oeuvres

This special collaborative exhibit will feature approximately 8 works by Charles Rogers, 15 works by Birger Sandzén, and numerous selections from a collection of pottery by Ray Kahmeyer loaned by the Kahmeyer Family.

Three renowned artists, each having connections to each other through their history at Bethany College, will have their work united in this exhibition at The Filley Art Museum. We hope each piece will gain added appreciation when presented as a group, curated by The Filley Museum from several regional collections. Rogers got to know Sandzén while still in high school, through Sandzén's annual high school art contests. As was the case for many students, this kind of first contact inspired Rogers to attend Bethany to study with Sandzén. When Sandzén retired in 1946, it was Rogers who was tapped to replace him. However, Rogers was working on his MFA at the time and wanted to finish the last year of his degree before returning to Lindsborg, so he

passed on the opportunity to teach at Bethany. Rogers was a long-time member of the Prairie Water Color Painters (founded 1933- ca.1984) that Sandzén organized. Ray Kahmeyer taught at Bethany beginning in 1967 and retired in 1993.

Charles B. Rogers (1911-1987)

A natural affinity helped Charles B. Rogers become a superb interpreter of the Great American West. He was born on the high plains near the north end of the old Chisholm Trail. His grandparents were pioneers. As a boy he played in buffalo wallows just rock throwing distance from the back steps. For years he slept on the ground as he searched the plateaus, studied the skies, and sketched the purple hills throughout the west.

At seventeen Rogers designed his own etching press and within four years was accepted by jury to show in an international exhibit. He was one of the youngest ever elected to the pre-eminent Society of American Etchers.

For ten years Mr. Rogers gave to college students the benefit of his knowledge and experience. He studied and worked on several awards in the form of scholarships and fellowships including one to the National Academy of Design in New York City, two at the Tiffany Foundation on Long Island, and two at the Huntington Hartford Foundation in California.

After earning his Master of Fine Arts degree at the California College of Arts and Crafts in Oakland, the artist returned to Kansas where he served as head of the School of Art at his Alma Mater. Mr. Rogers was appointed Resident Manager and Assistant Director of the Huntington Hartford Art colony where he served for more than a decade.



**Charles Rogers, "Brilliant Hills" Oil;
loaned by Pratt Public Library**



**Charles Rogers, "Flint Hills Landscape" Oil;
loaned by Birger Sandzén Memorial Gallery**

Ray Kahmeyer (1930-2007)

A gifted ceramic artist, his work has been widely recognized and received many awards. As an instructor of the Bethany College Art Department, Mr. Kahmeyer was honored as the Mary J. Mingenback Distinguished Professor. We will feature a rare and unique selection of his work in this exhibit, owned by his son Larry Kahmeyer, sister Joy (Kahmeyer) Davis, & Family. The collection the family will contribute to the exhibit will cover the period from the 1990s up through Ray's death in 2007. The exhibit may feature several rotations of the extensive collection, so be sure to visit often to see different selections from the collection. These works also highlight some characteristics of his primary influences: Shoji Hamada,

Bernard Leach, Angelo Garzio, Paul Soldner, and Warren MacKenzie.

In 1963, Ray Kahmeyer received his Bachelor of Arts degree and in 1968, a Master of Art degree from Kansas State University, Manhattan, Kansas. Ray also completed additional graduate study at the famous Alfred University, New York in 1969. Ray attended important workshops and conferences such as: The conference of the National Council on Education for the Ceramic Arts, the Kansas Artist-Craftsman Association conferences, and the Salt-Glaze workshop of Betty Woodman of Colorado University, Raku workshops of George Tiimock of the Kansas City Art Institute, and Paul Soldner of Aspen, Colorado. A significant period of his career spanned an active twenty-five year period, where Ray Kahmeyer exhibited his ceramics in more than forty-three invitational group shows, one-person exhibitions, and juried national and regional exhibitions. A list of just a few of the exhibitions includes the American Crafts Council South Central Exhibition, Central City, Colorado, the invitational Exhibition of the Wichita Art Museum, the Crafts Exhibition, Topeka, Kansas, the Invitation Exhibition of the Mulvane Art Museum, Topeka, Kansas, The Southwest Craftsman Exhibition and the Syracuse Ceramic National Exhibition. It should also be noted that Ray Kahmeyer's work has received purchase awards and exhibition awards. His ceramics are part of numerous private and public collections.

In the summer of 1977 and 1980, Ray conducted a two week-long ceramic workshops at

Bethany College which included professional ceramic artists Warren Mac Kenzie, Jack Troy of Salt Glazed Ceramics, and professors of art at Juiata College, Huntington, University of Minnesota and Pennsylvania.

Birger Sandzén (1871-1954)

Birger Sandzén was born in Blidsberg, Sweden in 1871. He studied art in Stockholm with Anders ---->



**Birger Sandzén, "A Mountain Home" Lithograph; from
the Dr. Vernon and Emily "Mimi" Filley Permanent**



**Ray Kahmeyer, Collection of several pots and ceramic
vessels; loaned by the Kahmeyer Family**